



iCities: World Class CBDs Conference

Delivering Sustainable and Affordable Housing through Innovative Finance Structures

Andrew Brooks

General Manager Development and Property
Services - SGCH Group

Great places for everyone 



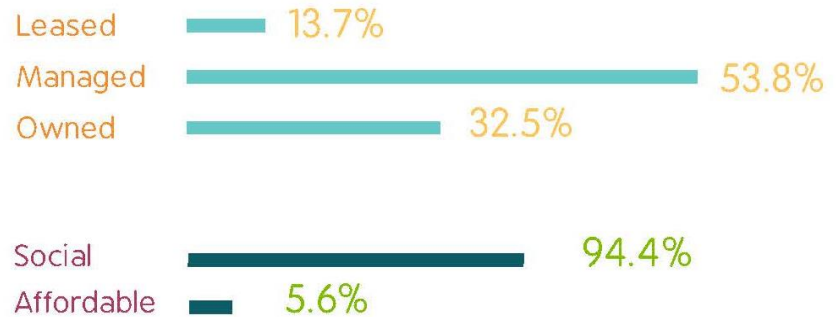
About SGCH



Overview of portfolio



Total properties



Homelessness and Housing Stress

28,191 / 105,237 

People are homeless in NSW

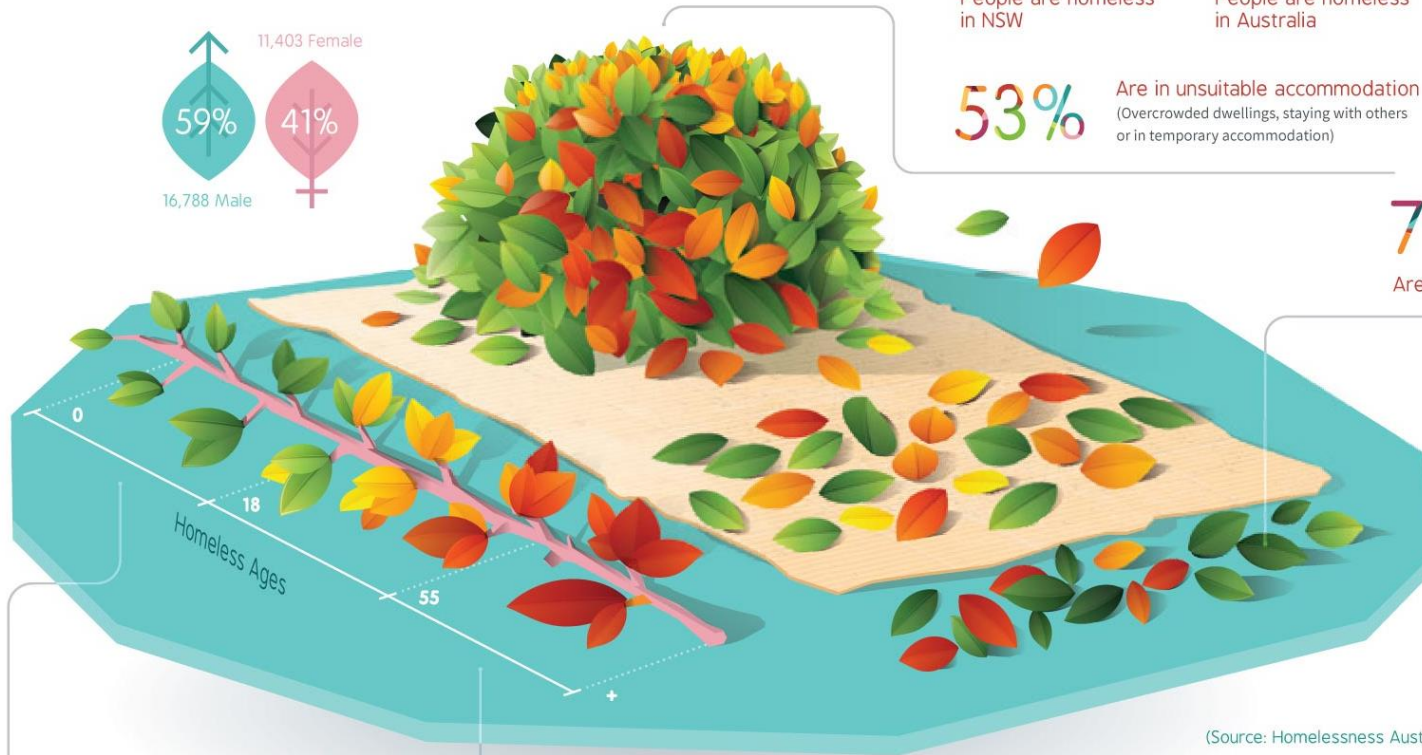
People are homeless in Australia

53%

Are in unsuitable accommodation
(Overcrowded dwellings, staying with others or in temporary accommodation)

7%

Are sleeping rough



22.3% / 16.2%

Are children aged up to 18 years

Are senior people aged over 55 years

(Source: Homelessness Australia)

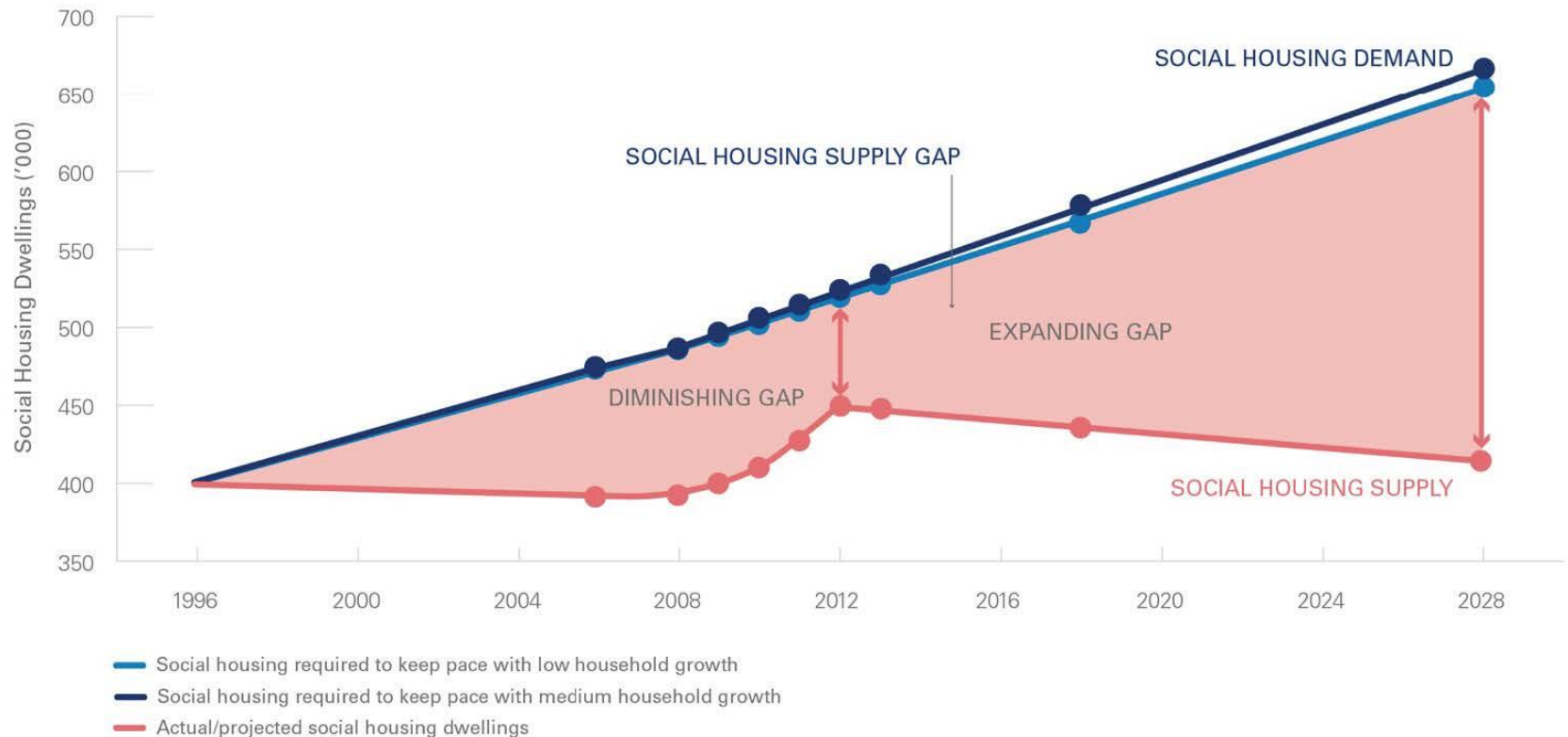
Social Housing in Australia

Jurisdiction	Public	Community	Total
NSW	110,214	28,214	138,428
Victoria	64,404	12,689	77,093
Queensland	51,248	11,585	62,833
SA	33,361	6,608	39,969
WA	39,428	5,942	45,370
Tasmania	7,234	6,109	13,343
ACT	10,833	663	11,496
NT	4,905	295	5,200
Total Australia	321,627	72,105	393,732

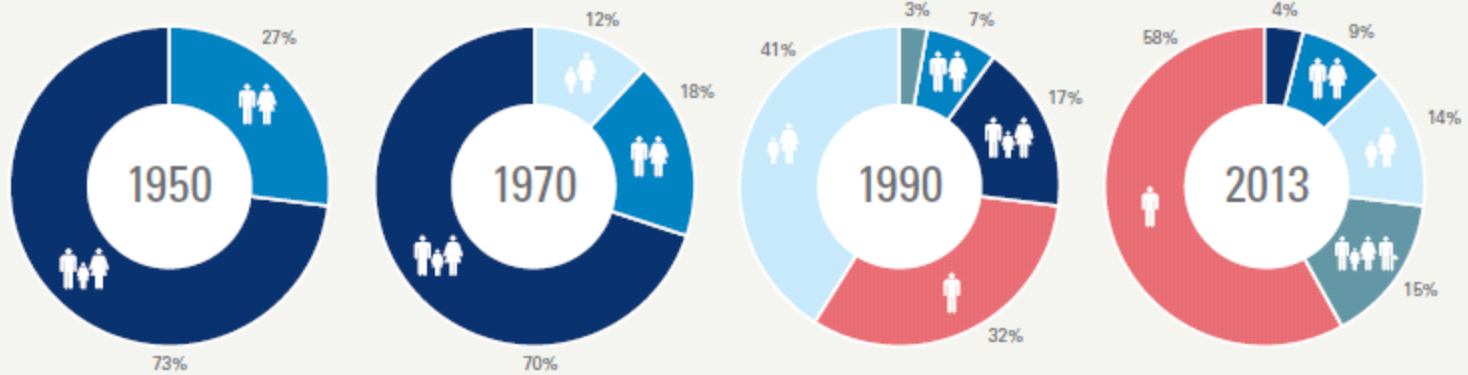


Our system under pressure

INCREMENTAL POLICY CHANGE SEES THE SYSTEM FAILING TO MEET NEEDS



NSW PUBLIC HOUSING TENANT PROFILE BY HOUSEHOLD TYPE (1950 – 2013)



From 1990 - 2013:

- Lone singles have increased by over 80% to 58%
- Couples with children have decreased by over 75% to 4%

Couples with children
 Couples no children
 Single parents
 Lone singles
 Other (e.g. extended families, group)

Source: NSW Department of Family and Community Services

Delivering Quality Outcomes



Morgan's Story



Housing supply – a commodity?



Affordable Housing



Great places for everyone 

sgch.com.au

New Policy



Communities Plus




 **COMMUNITIES PLUS**

EXPRESSIONS OF INTEREST

First Six Sites of the Communities Plus Program

Closing Date: 10.00am 16th February 2016
eTender No: LAHCR2015/112

A collage of four images: a young child, a woman holding two children, an elderly woman, and a group of people working together.

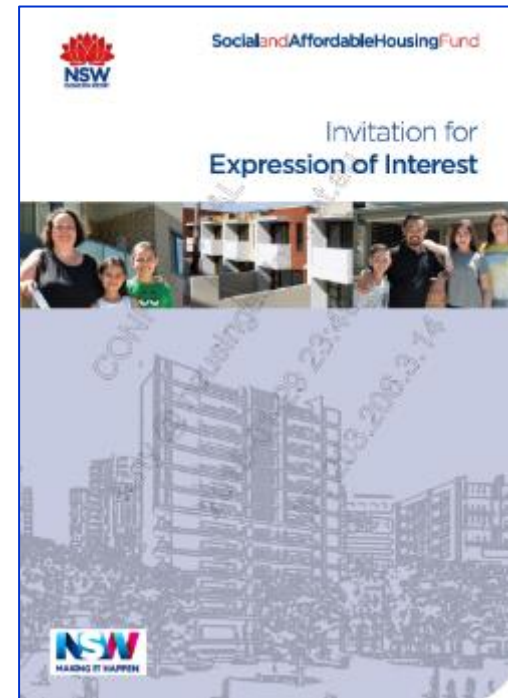
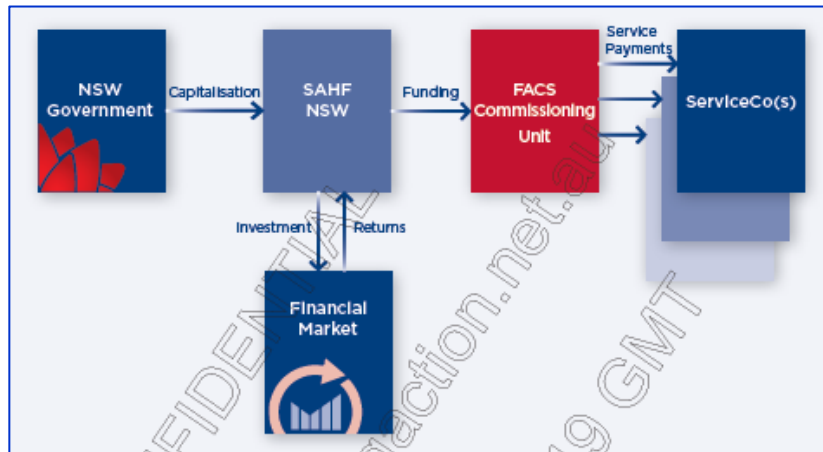
 **NSW**
MAKING IT HAPPEN

THE SITES

The first release of the Communities Plus Program consists of six sites, three in metropolitan Sydney and a further three sites located in regional New South Wales. These sites all have medium and high density zoning, and are suitable for development as integrated social housing.

A map of New South Wales with a circular inset showing a detailed view of the Sydney metropolitan area. Six sites are marked with dots and labeled: Berrimbong, Werris Creek, and Dubbo in the north; and Sydney, Gosford, and Newcastle in the south.

Social and Affordable Housing Fund (SAHF)



Services packages



NSW Government Management Transfers Program





SGCH

PORTFOLIO



SGCH Portfolio - Westpac



Great places for everyone 

sgch.com.au





SGCH

SUSTAINABILITY

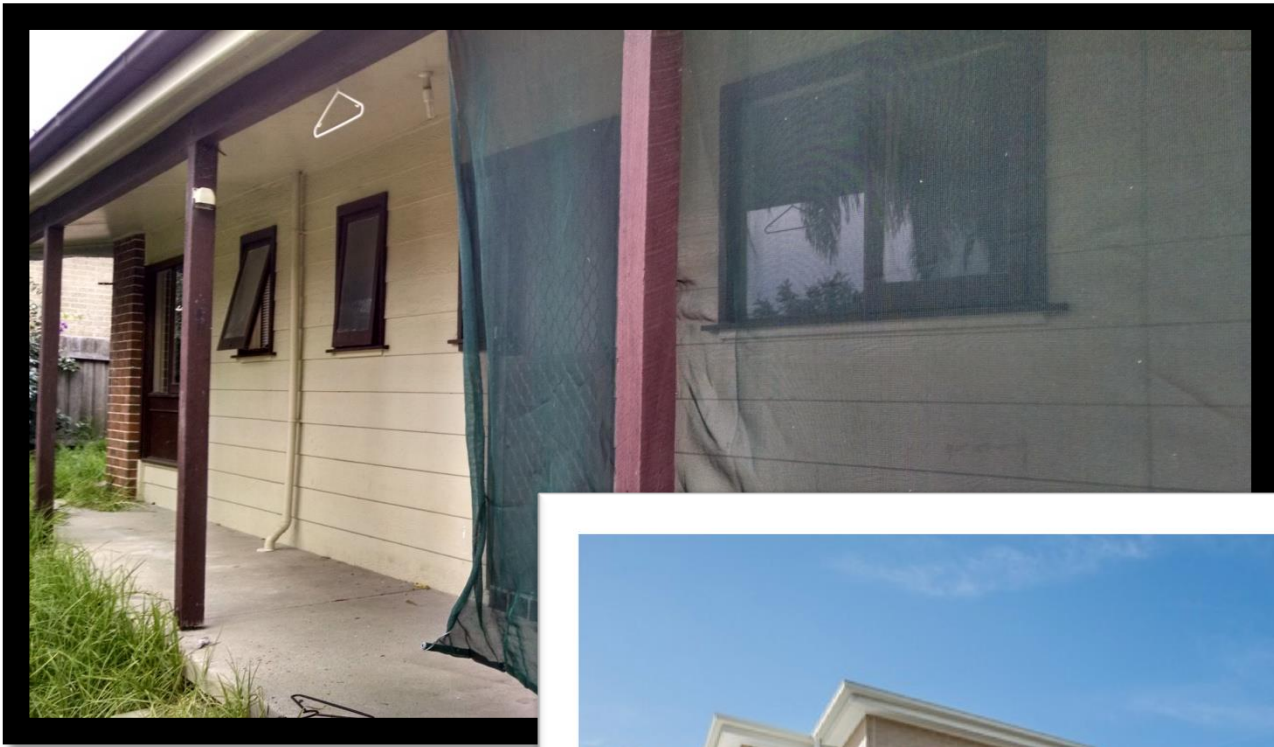


SGCH Sustainability - CEFC



Great places for everyone 

sgch.com.au



SGCH Sustainability - OEH

- NSW Office of Environment and Heritage
- Home Energy Action program
- \$5.4M co-funding agreement to retrofit existing social housing stock with energy efficient measures.





Great places for everyone 

